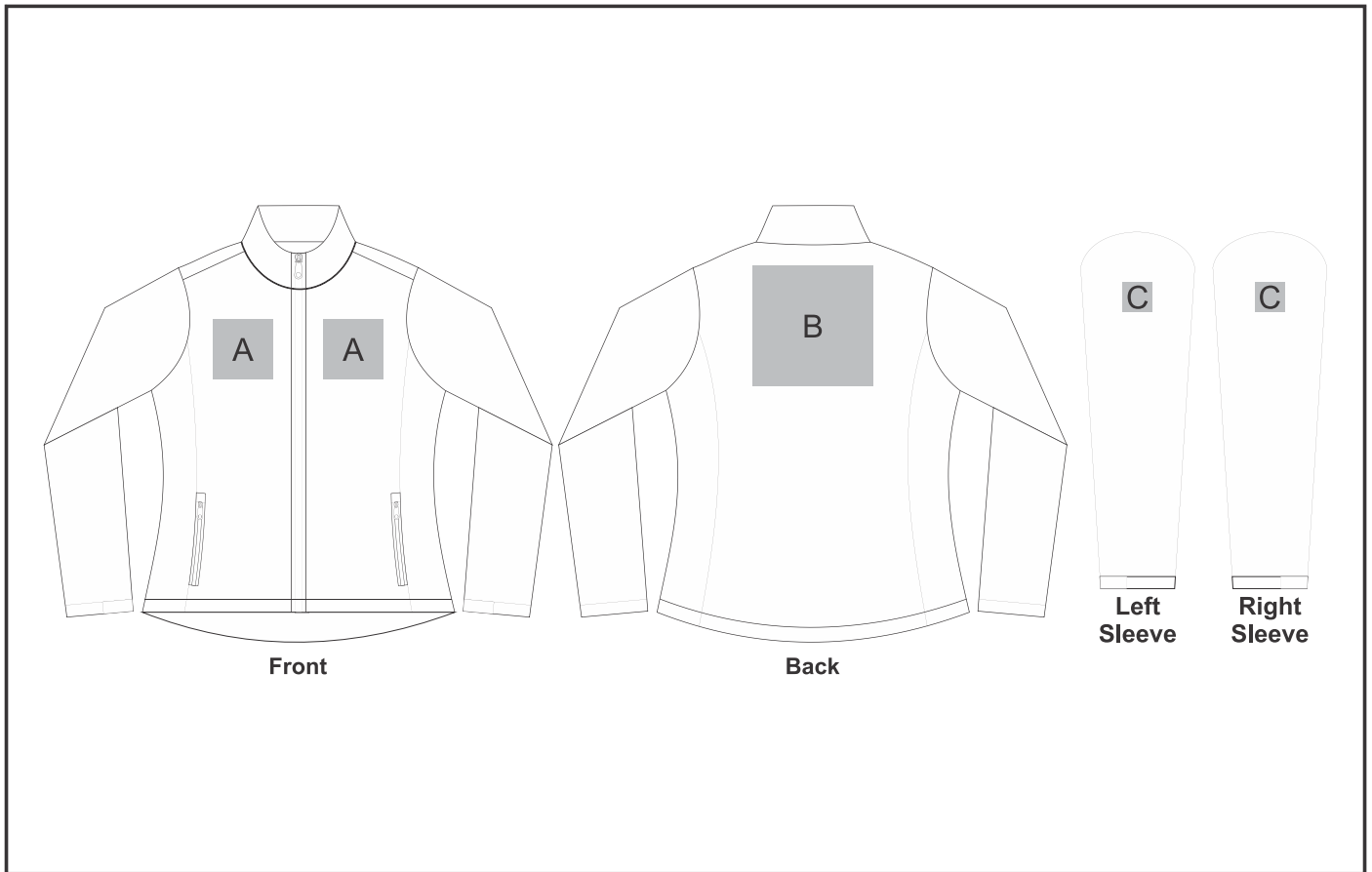


BIZ-9302

Ladies Pinnacle Softshell Jacket



Need to know:

- Includes 1-Position Embroidery OR 1-Position Digital Transfer OR 1-Position Deboss (setup fee applies)

- EMB/DTC inclusive Parameters: Left/Right Chest or Back=100mm x 100mmv

Branding Options:

Position A

1. Embroidery (EM-CLOTHING)
N/A
Size: 100mm wide x 100mm high
2. Debossing Clothing (BOS-C)
N/A
Size: 100mm wide x 50mm high
3. Digital Transfer Clothing A6 (DTC-A6)
Full Colour
Size: 100mm wide x 100mm high
4. Silicone (STP-A)
N/A
Size: 30mm wide x 30mm high
5. Silicone (STP-B)
N/A
Size: 50mm wide x 50mm high
6. Silicone (STP-C)
N/A
Size: 80mm wide x 80mm high
7. Silicone (STP-D)
N/A
Size: 100mm wide x 40mm high

Position C

1. Embroidery (EM-CLOTHING)
N/A
Size: 50mm wide x 50mm high
2. Debossing Clothing (BOS-C)
N/A
Size: 50mm wide x 30mm high
3. Digital Transfer Clothing A6 (DTC-A6)
Full Colour
Size: 50mm wide x 50mm high
4. Silicone (STP-A)
N/A
Size: 30mm wide x 30mm high
5. Silicone (STP-B)
N/A
Size: 50mm wide x 50mm high

Position B

1. Embroidery (EM-CLOTHING)
N/A
Size: 200mm wide x 200mm high
2. Debossing Clothing (BOS-C)
N/A
Size: 150mm wide x 60mm high
3. Digital Transfer Clothing A6 (DTC-A6)
Full Colour
Size: 105mm wide x 148mm high
4. Digital Transfer Clothing A5 (DTC-A5)
Full Colour
Size: 210mm wide x 148mm high
5. Silicone (STP-A)
N/A
Size: 30mm wide x 30mm high
6. Silicone (STP-B)
N/A
Size: 50mm wide x 50mm high
7. Silicone (STP-C)
N/A
Size: 80mm wide x 80mm high
8. Silicone (STP-D)
N/A
Size: 120mm wide x 40mm high